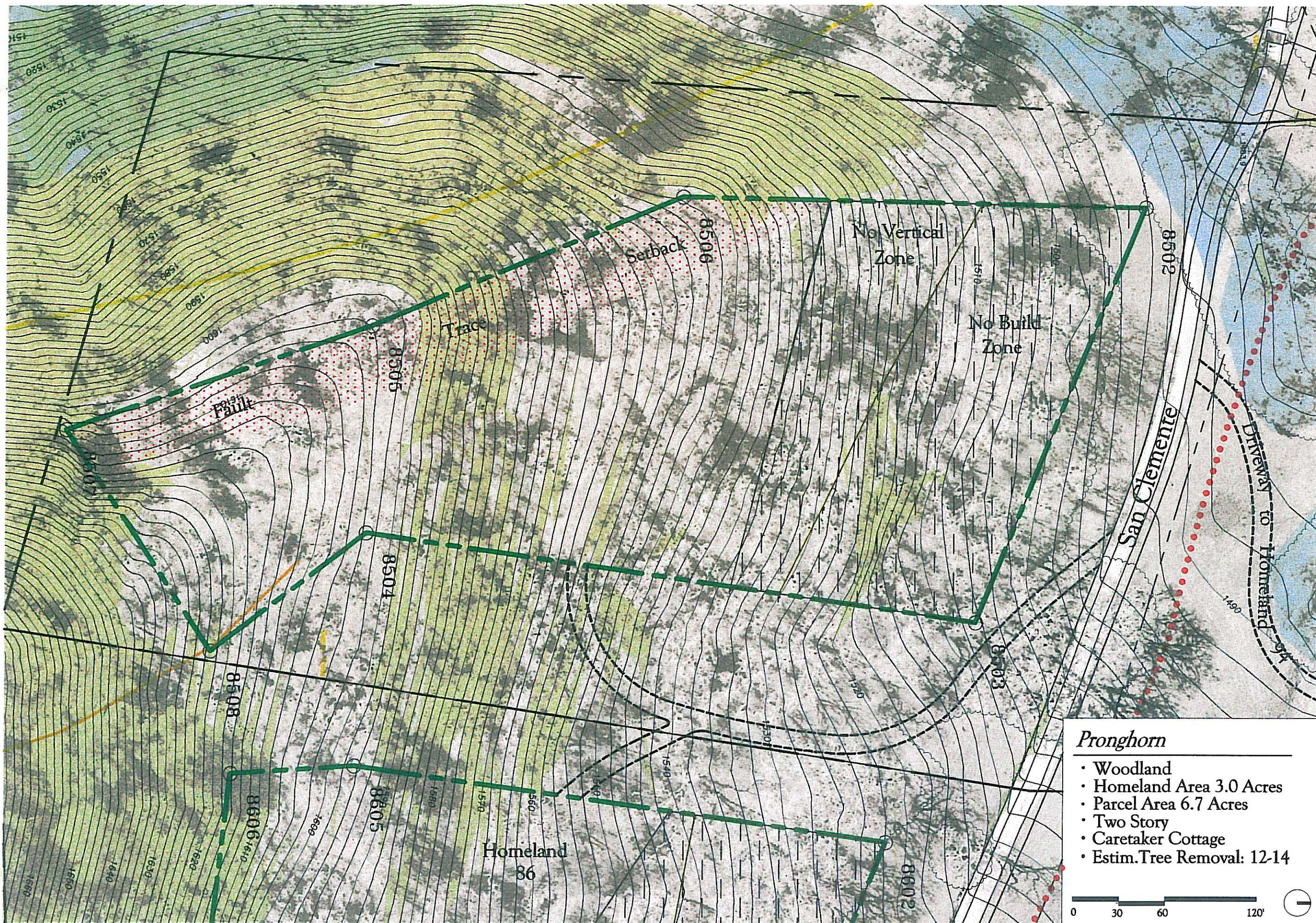




The purpose of this Homeland Diagram is to assist the Owner in understanding existing site conditions and how a house, and other site improvements, can both respect and make full use of the features of the site. All sizes and dimensions are approximate.

This Homeland Diagram illustrates locations for building and site improvements, which have been determined by the DRB to satisfy the resource conservation and community design objectives of The Santa Lucia Preserve. The DRB may determine that other locations within the Homeland also meet these objectives. However, notwithstanding this illustration, the DRB shall review and approve all building and site improvements, including those illustrated, in accordance with the policies and procedures of the Design Guidelines and Regulations of The Santa Lucia Preserve.

Homeland Diagram



- LEGEND**
- Homeland Boundary
 - Proposed Driveway
 - Trail Location
 - Wetlands
 - Riparian Corridor
 - Archaeological Sites
 - 30% Slopes
 - Dormant/Active Landslide Area
 - Fault Trace
 - Potential Silhouette Ridgelines
 - Utility Drop Point
 - Septic Envelope Location

SANTA LUCIA PRESERVE

HART/HOWERTON
Planners, Architects and
Landscape Architects
San Francisco New York

Pronghorn

- Woodland
- Homeland Area 3.0 Acres
- Parcel Area 6.7 Acres
- Two Story
- Caretaker Cottage
- Estim. Tree Removal: 12-14



HOMELAND FOR PARCEL

85

March 2000

The topography, vegetation coverage and other information shown on this Homeland Diagram is based upon 1996 aerial survey data and may not accurately reflect current conditions. While suitable for general planning purposes, the Design Review Guidelines require that the information be confirmed and updated by the owner, and that the Design Review submittals contain accurate current survey information.